

The Carolina

by Select Homes, Inc.



Open Concept - 3 Bedrooms • 2 Bathrooms

- Open Concept Floor Plan
- Large Kitchen Island Bar
- Upscale Appliances
- Master En-Suite with Ceramic Double Shower
- Approx. 1,600 square feet living space

Call (336) 625-4693

SELECT HOMES, INC.
1-800-FACTORY (322-8679)

Corporate Office
175 NC Hwy 49 South
Asheboro, NC 27205

Building local family homes for
over 30 years. Since 1984.

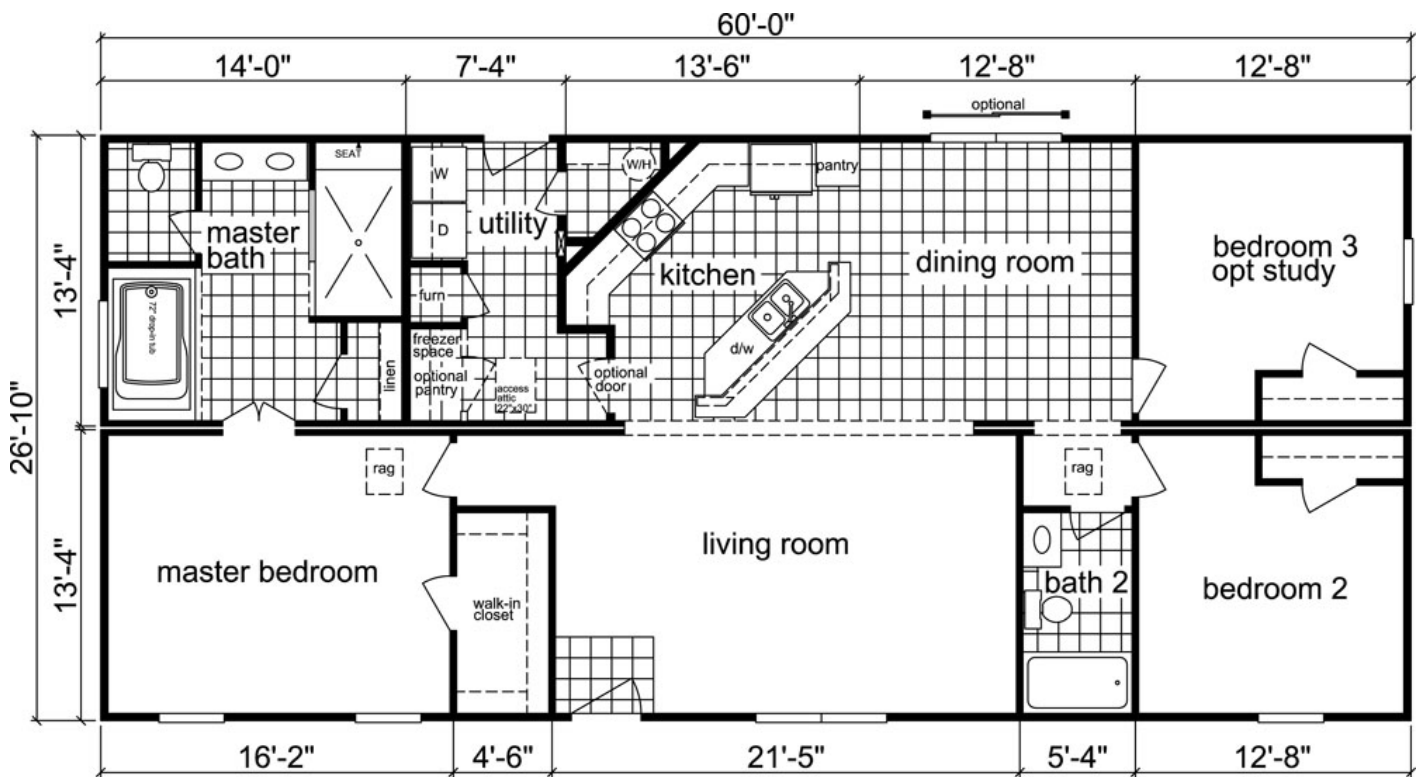
www.selectmodular.com

The Carolina



Artists rendering shown with optional window and saddle roof porch.

The Carolina is an open concept floor plan with an awesome kitchen open to the living room. The master en-suite includes a ceramic double shower, luxury tub, and double sinks. A large utility comes with laundry connections, tons of storage, and a back door entrance. Step up to an exclusive Select home.



True Modular™ Means Better Built



1-800-FACTORY (322-8679)